

## Feature

The 3FA pump is for large capacity and mid. Pressure. The max. flow rates and discharge pressures are 93.6 L/min or less and 2.5 MPa or less, respectively. The pump is used for hydraulic and lubrication applications. The dedicated motor is often used with the 3FA pump. Since this pump is relatively small, there are many cases that the pump is integrated into a machine. The rotation direction is clockwise, which is opposite to that of 1A, 1HG and 2A.



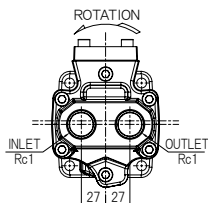
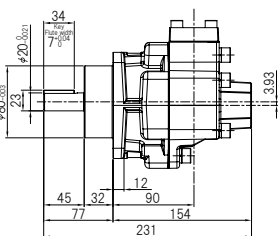
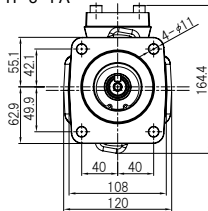
## Model

FTP-	Model No.	Form	Seal material	Relief valve	Relief valve set pressure
	FA				
	320	No mark: Standard	No mark: Standard	No mark: No valve	ex.
	330	M: Dedicated motor (short shaft)	(-5~80°C)	VB: With valve	0.1 : Set Pressure 0.1MPa (Spring No.1L)
	340		VF: Viton (R) for high temp. (120°C)	(Internal-return)	0.5 : Set Pressure 0.5MPa (Spring No.2L)
					1.0 : Set Pressure 1.0MPa (Spring No.3L)
					2.0 : Set Pressure 2.0MPa (Spring No.4L)

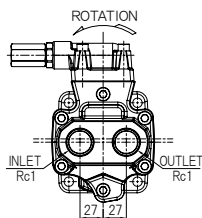
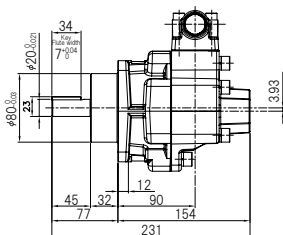
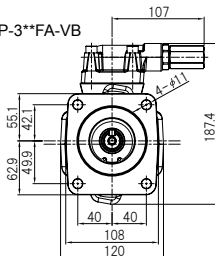
Model examples: FTP-320FAM-VB1.0 (With relief valve (set pressure 1.0MPa), exclusive motor)

## Dimensional diagrams (mm)

■ FTP-3\*\*FA



■ FTP-3\*\*FA-VB



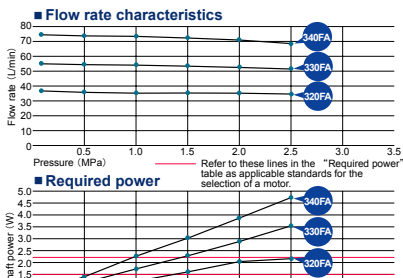
## Spec

Model	Spec	Flow rate per rev. (ml/rev)	Theoretical flow rate (L/min)		Max. discharge pressure (MPa)	Max. revolution (min <sup>-1</sup> )	Approx. weight (kg)
			1500min <sup>-1</sup>	1800min <sup>-1</sup>			
320FA (VB)		26	39.0	46.8	2.5	1800	10.5
330FA (VB)		39	58.5	70.2	2.5	1800	10.5
340FA (VB)		52	78.0	93.6	2.0	1800	10.5

## Performance

● Test conditions Oil: ISO-VG46 Oil temp.: 40°C

### At 1,450 rotations (50Hz)



### At 1,750 rotations (60Hz)

